



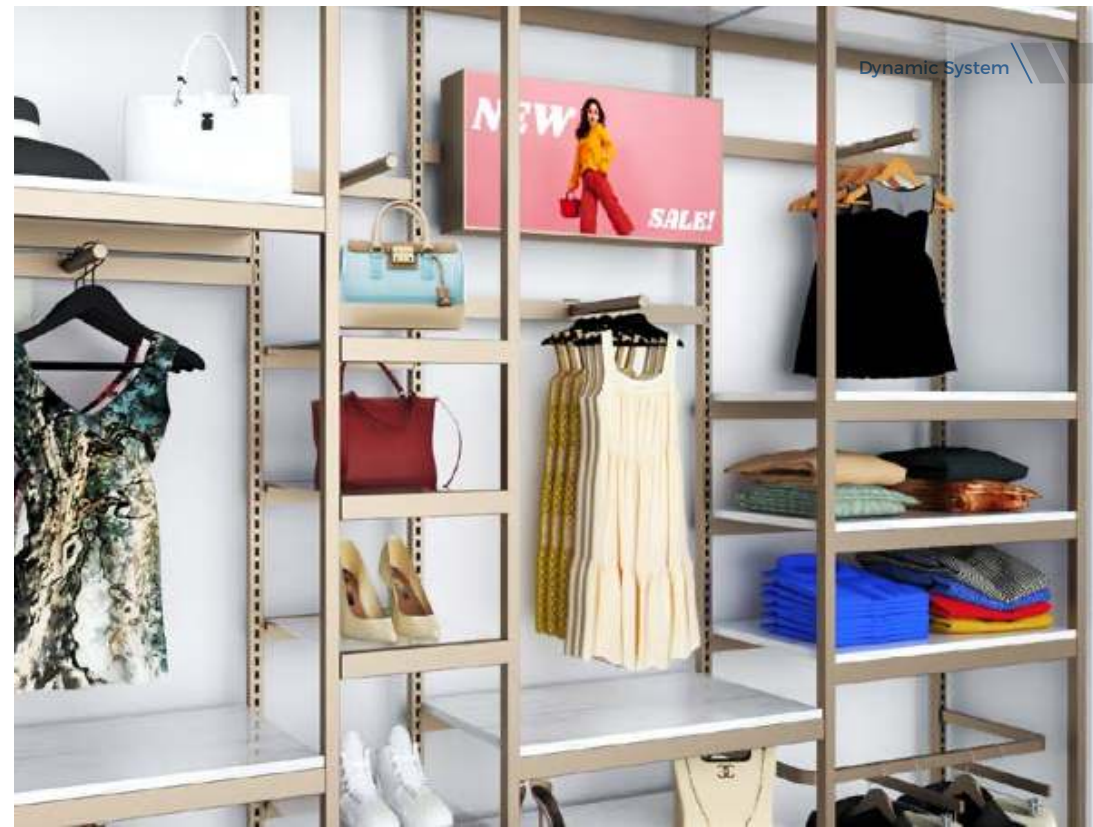
# **DYNAMIC MODULAR SYSTEM**

# WHY DYNAMIC?

Dynamic is a modular display system formed by combining different types of accessories, cabinets, shelves, illuminated canopies and many other equipment in accordance with customer's requirements and current decoration if any.



Dynamic system parts are designed to feature a "snap-in" and "plug-in" structure. You don't need any bolts and nuts when installing the modules.



MODERN

MODULAR

ADAPTABLE TO DIFFERENT CONCEPTS

SUITABLE FOR MANY STORE TYPES

VARIOUS DECORATIVE OPTIONS

EASY INSTALLATION

**Can be used for:** Cosmetics, Glassware, Home Textile, Children's / Men's / Women's Apparel, Shoes & Bags, Underwear, Toys, Stationery, Consumer Electronics, Tobacco Shop, Supermarket and many more retail shops .

With Dynamic, you will have flexible designs for your store and change your product display as you wish. Various accessory options give you unlimited flexibility in product display.

Cabinets will help keep stock of your displayed products.



Create distinct and extraordinary design with Dynamic.



Illuminated or non-illuminated canopy designs will complete your product presentation. Thanks to the plug-in design, these canopies can be applied to different locations of the system, enriching the look of your store and making your brand stand out.



You can diversify your display and highlight your products by using the wide variety shelf types of the dynamic system. Offering various color options, Dynamic easily adapts to your store concept.





### TECHNICAL DETAILS

Metal Color Options

- RAL 7022
- SOVA BLUE
- RAL 9010

Accessory Color Options

- CHROME
- SATIN CHROME

Wood Color Options

- OAK
- CREAM
- WHITE

### POWDER COATING FEATURES

Electrostatic Epoxy Polyester Powder Coating

### DYNAMIC MODULAR SYSTEM

Part List

No	Model & Parts	Height (H)	Depth (D)	Length (L)	Illumination	Coating
1	Dynamic Frame 25x25 mm	2000 / 2500	460	-	-	Powder Coating
2	Dynamic Beam 15x25 mm	-	-	350 / 665 / 1000	-	Powder Coating
3	Dynamic Barrier 20mm	-	-	350 / 665 / 1000	-	Powder Coating
4	Dynamic Led Top Canopy 15 mm	400	15	350 / 665 / 1000	✓	Powder Coating
5	Dynamic Box Canopy With Backlight DG	400	100	350 / 665 / 1000	✓	Powder Coating
6	Dynamic Box Canopy With Backlight ATG	400	100	345 / 660 / 995	✓	Powder Coating
7	Dynamic Wooden Top Canopy	200 / 400	18	350 / 665 / 1000	-	Wooden
8	Dynamic Wooden Top Canopy With Blackboard	200 / 400	18	350 / 665 / 1000	-	Wooden
9	Wooden Single Drawer Cabinet	500	460	665 / 1000	-	Wooden
10	Wooden Double Drawer Cabinet	500	460	665 / 1000	-	Wooden
11	Plexyglass Billboard	350	-	350	-	Plexyglass
12	Dynamic Wooden Box Shelf	350	350	350	-	Wooden
13	Dynamic Wooden Shelf (Beam)	-	460	350 / 665 / 1000	-	Wooden
14	Dynamic Glass Shelf (Beam)	-	460	350 / 665 / 1000	-	Glass
15	Dynamic Wooden Shelf (Bracket)	-	400	665 / 1000	-	Powder Coating
16	Dynamic Glass Shelf (Bracket)	-	400	665 / 1000	-	Powder Coating
17	Dynamic Bracket for Wooden / Glass Self	-	400	665 / 1000	-	Powder Coating
18	Metal Back Panel	220 / 420	-	665 / 1000	-	Powder Coating
19	Metal Perforated Back Panel	420	-	665 / 1000	-	Powder Coating
20	Grille Back Panel	500 / 1000	-	665 / 1000	-	Powder Coating
21	Metal Shelf	-	400	665 / 1000	-	Powder Coating
22	Dynamic Hanger ATG	-	400	-	-	Chrome
23	Dynamic Sloping Hanger ATG	-	400	-	-	Chrome
24	Dynamic Stepped Hanger ATG	-	400	-	-	Chrome
25	Dynamic U Hanger ATG	-	400	665 / 1000	-	Chrome
26	Wire Hook DSG	-	250 / 300 / 350	-	-	Chrome
27	Wire Hook with Label Holder DSG	-	250 / 300 / 350	-	-	Chrome
28	Wire Hook Double DSG	-	250 / 300 / 350	-	-	Chrome
29	Wire Hook ATG	-	250 / 300 / 350	-	-	Chrome
30	Wire Hook with Label Holder ATG	-	250 / 300 / 350	-	-	Chrome
31	Basket Rack ATG	100	300	200	-	Powder Coating
32	Wine Rack Type 1	400	460	665 / 1000	-	Wooden
33	Wine Rack Type 2	400	460	665 / 1000	-	Wooden
34	Wine Rack Type 3	400	460	665 / 1000	-	Wooden