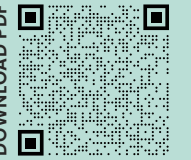


**FLEXIBLE
AND CUSTOMIZED
DESIGNS**



3

PHARMACY
DISPLAY FIXTURES

True Ideas for Retail Spaces



HELLO.

WE'RE **SOVA**.

WE'RE HERE TO OFFER YOU A NEW **PATH**.

WE **DREAM** RETAIL WE **DESIGN** RETAIL WE **PLAN**
RETAIL WE **KNOW** RETAIL WE **UNDERSTAND** RETAIL WE
EXPERIENCE RETAIL WE **THINK** RETAIL WE **MAKE** RETAIL
WE **ADMIRE** RETAIL

WE **LOVE** RETAIL

we're | **SOVA**
RETAIL

WELCOME TO **SOVA**



A close-up, high-contrast photograph of an owl's face. The owl's large, round, yellow-orange eyes with black pupils are the central focus, looking directly at the viewer. The surrounding feathers are dark brown and grey, with fine details visible. The lighting is dramatic, highlighting the texture of the feathers and the intensity of the eyes.

we're | **SOVA**
RETAIL

CHOOSE YOUR PATH



INNOVATIVE APPROACH

We follow all the developments in the retail world. We strive to provide better quality products and services to our customers.

We aim to increase our customers' profitability by running ahead of the market with innovative solutions.

A PROJECT STORY



DREAM TO REALITY STEP BY STEP

Brands that will reach for the future are those that have stores which can touch the soul of the consumer. We use our expertise and our endless energy to design "unique" stores for you.

PROVIDING
SOLUTIONS
FOR EVERY
KIND OF
RETAILING,
SOVA
REALIZES
YOUR
STORE
WITH THE
RIGHT LAYOUT,
BACKED UP
BY A
WIDE
RANGE
OF
EQUIPMENT
AND
ACCESSORIES



DISCOVER OUR PRODUCT RANGE FOR
ADDITIONAL VALUE IN YOUR BUSINESS

1 SPECIALTY RETAIL DISPLAYS

2 DYNAMIC! DISPLAY SYSTEMS

3 PHARMACY DISPLAY FIXTURES

PHARMACY DESIGN 8

PHARMACY DISPLAYS24

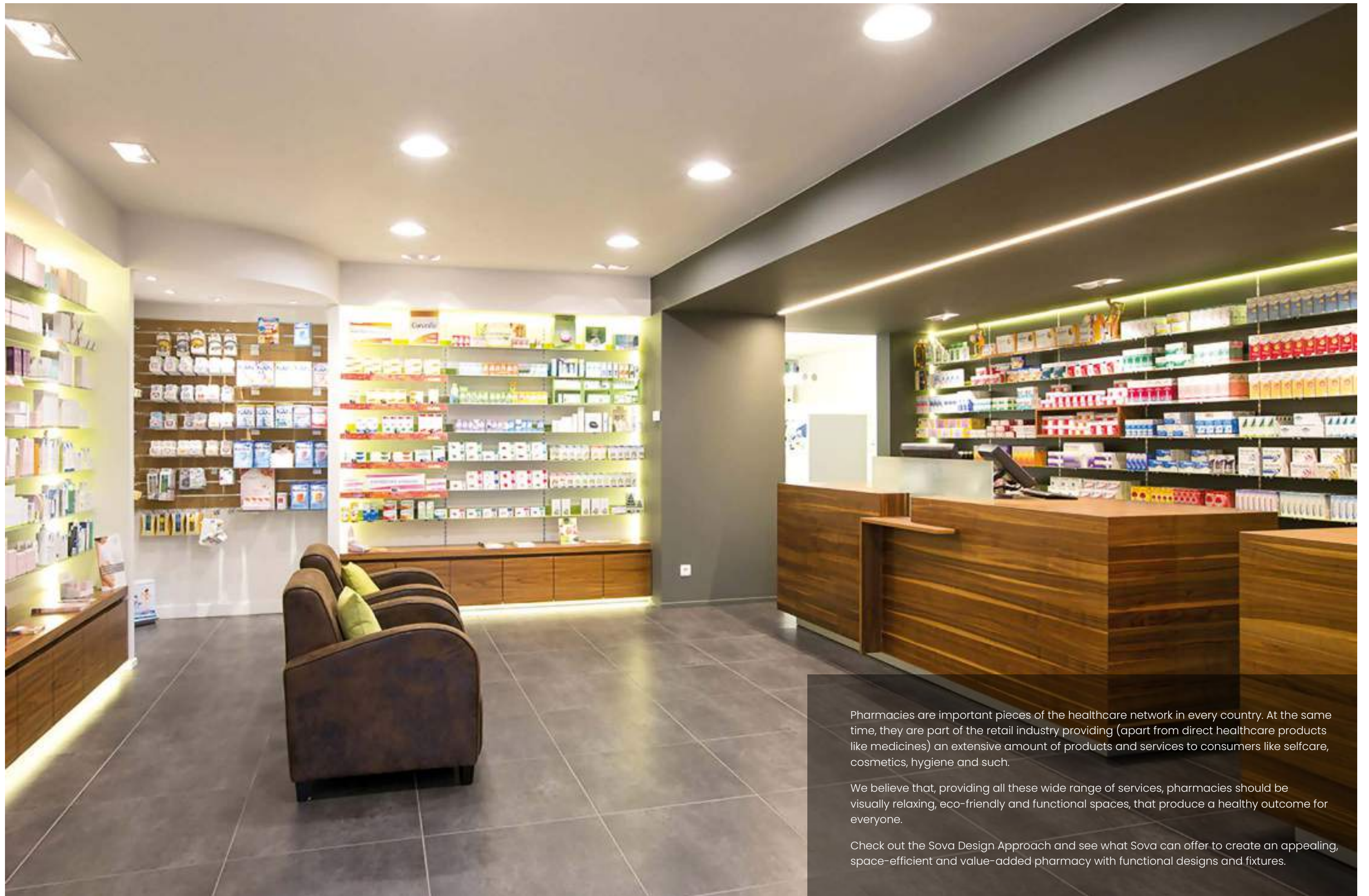
FARMARACK DRUGSTORE CABINET 52

PHARMACY STORAGE SYSTEM 62

4 SHELVING & STORAGE RACKS

5 RETAIL EQUIPMENT & ACCESORIES





Pharmacies are important pieces of the healthcare network in every country. At the same time, they are part of the retail industry providing (apart from direct healthcare products like medicines) an extensive amount of products and services to consumers like selfcare, cosmetics, hygiene and such.

We believe that, providing all these wide range of services, pharmacies should be visually relaxing, eco-friendly and functional spaces, that produce a healthy outcome for everyone.

Check out the Sova Design Approach and see what Sova can offer to create an appealing, space-efficient and value-added pharmacy with functional designs and fixtures.













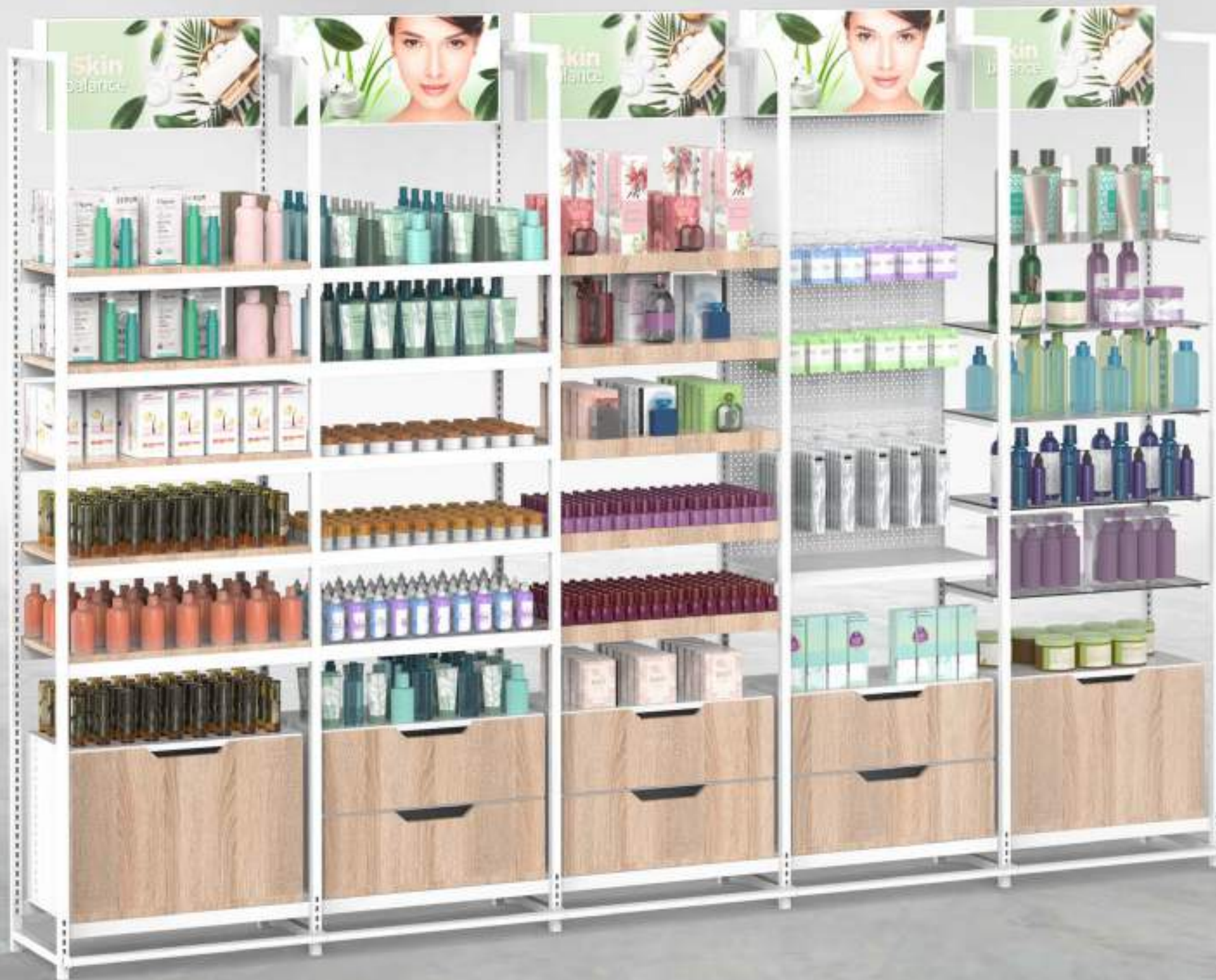




PHARMACY DISPLAYS

DYNAMIC!

COSMETICS & PHARMACY



S25 PHARMACY

WALL UNIT TYPE I



S25 PHARMACY

WALL UNIT TYPE II



S25 PHARMACY

GONDOLA



SEAT&SHELF

ISLAND



Designed especially for busy pharmacies, **Seat&Shelf** is the perfect solution for consumers who have to wait for a while to get the service they need. Seat&Shelf not only provides the consumers with a seating area, but **also houses a stylish pop-up display** in the same spot, creating a seamlessly blended display fixture, **tailor-made** for pharmacies.

PHARMALAND

PHARMACY TABLE



All around, nicely blending island display for your wine & spirits sections. Wineland offers table top **vertical and horizontal** display options where you can highlight new or on-sale products in bulk.

2 levels of shelves are large enough to display products like promotional, deluxe or gift packs, where it's not easy to display them on standard wall units.

Easily match the look of Wineland to your wall units with selectable **metal/wood** color options.



HEXAGON

ISLAND



Attractive **hexagonal wooden columns** combined to form an **aesthetic** presentation island. A very flexible solution that is highly responsive to the nature of the displayed products. Easily form a different combination when needed. Customization options available.



PHARMABOX

PHARMACY BASKET



Simple yet strong display basket for highlighting desired products in the pharmacy. Can be used either with a flat or a stepped wooden base, offering a **flexible vertical placement** of the goods to be displayed. Ideal for new or popular products.

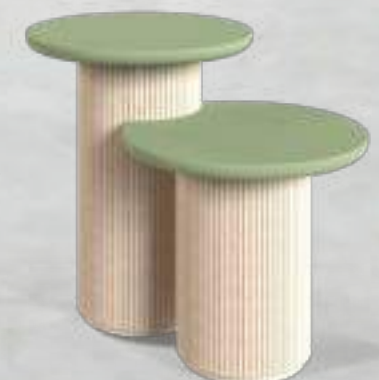


TWIN TABLE

PHARMACY TABLE



A neat table presentation, with two connected round tables forming a visually appealing spot in the pharmacy. Twin Table features a combination of **one low and one high** wooden look table, helping consumers catch a sight on the displayed products much faster. Customization options available.



Z-GON

ISLAND



Z-GON offers a metal profile structure for a more **durable** use and a **flexible** display alternative with a variety of accessories that can be used.

Use the optional u-profile on the Z-GON table to attach **additional shelves** or **info-boards**, create table **combinations** or use side shelves to create a unique display based on your requirements.

S-GON

PHARMACY TABLE



A colorful presentation in pharmacies is always preferable. Especially in the free spaces of the pharmacy, presenting **on-sale/featured** products or special products to be highlighted is a true need.

Offering a minimal, stylish and rich product presentation, S-GON is your ultimate solution to such needs. The side tables for an **inclined display** and the small **side boxes** for speciality goods like vitamins or face masks makes this display table a must-have solution to create a visually appealing and efficient sales spot.



PHARMA-360

ISLAND



Enrich your pharmacy presentation with a **360 degree** round display solution. **Easy to setup, robust** round shelving unit that is designed for highlighting the new, seasonal or discounted products.

High visibility of the products enables **higher volume of sales**, thanks to Pharma-360's almost invisible structure that blends into the product display perfectly.



CASH DESK

MODULE I



CASH DESK

MODULE II



CASH DESK

MODULE III – EXTERNAL CORNER



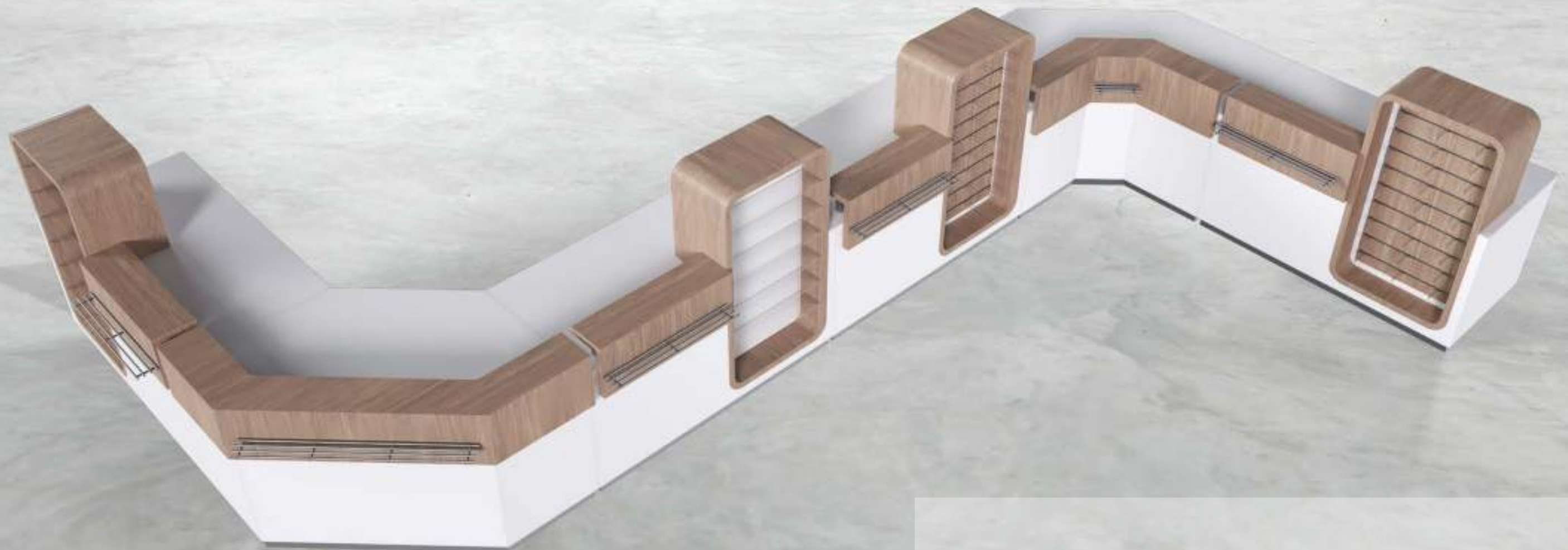
CASH DESK

MODULE IV – INTERNAL CORNER



CASH DESK

SAMPLE SETUP



Modular counter system that can be customized according to the available space in the pharmacy. Cash counters, customer-facing display areas for small products, cashier-facing cabinets, corner counters and more. **Use any module to form the best fit for your reserved space.** Customization options available.

CASH DESK

SAMPLE SETUP





FARMARACK

FARMARACK

COMPACT DRAWER SYSTEM

Farmarack is a pharmacy drawer rack system that offers the ability to store a vast amount of medicine in a small space. It not only blends into the current architectural concept of the pharmacy, but also gives the opportunity to have more sales space for products like selfcare, cosmetics, orthopedics and the like.

With customizable colors for drawer wood faces, it's very easy to install Farmarack as a niche wall compact storage unit, 100% matching the current colors used in the pharmacy.



INDUSTRIAL
DESIGN



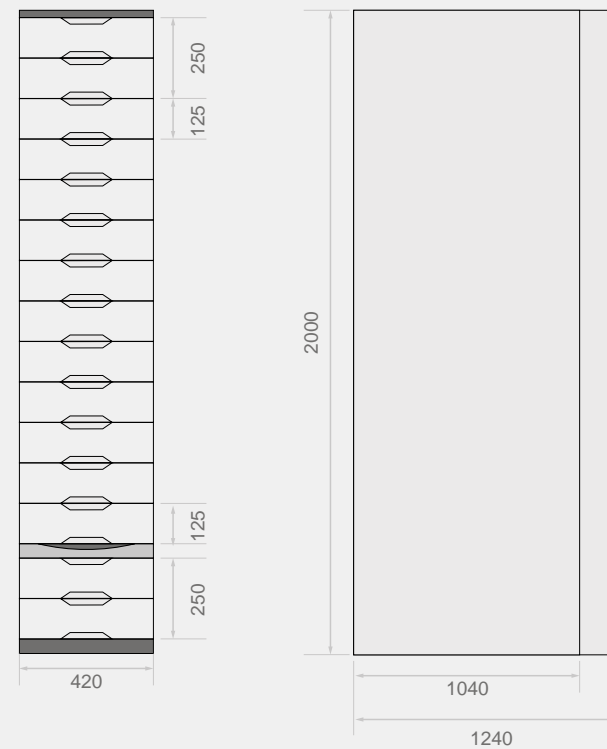
EASY
ASSEMBLY



EASY
TRANSPORT

FARMARACK

DRUGSTORE CABINET



High capacity drug storage with **telescopic full swing drawers**. Keeps your sales space intact. Easy access to all drugs with telescopic ladder and **labeling system**

One column has a total of 11 pieces of 125 mm high drawers, 2 pieces of 250 mm high double drawers and a single piece of telescopic ladder.

Farmarack is a modular system. Any desired unit size can be created by adding modules of 420 mm side by side. The side, top and back of the unit are covered by wooden coverings of 18 mm medium-density fiberboard (MDF).

Shipped out as completely disassembled and installed on site **www.sovaretail.com**.

DIMENSIONS

2050 x 1040 x 420 mm
2050 x 1240 x 420 mm

MAIN COLOR

RAL 9003

Single Telescopic Drawer

80 kg load capacity with bearing supported rails.
Drawer compartments.
Open drawer depth 900 / 1100 mm.
Drawer height: 125 mm.



Double Telescopic Drawer

80 kg load capacity with bearing supported rails.
Drawer compartments.
Open drawer depth 900 / 1100 mm.
Drawer height: 250 mm.



Telescopic Ladder

Opens/Closes with rail mechanism 120 kg load capacity.



Drawers can be painted in different colors. Please contact Sova sales staff for alternative colors.

LID COLORS

RAL 7035 RAL 6019 RAL 1023 RAL 2008 RAL 3020

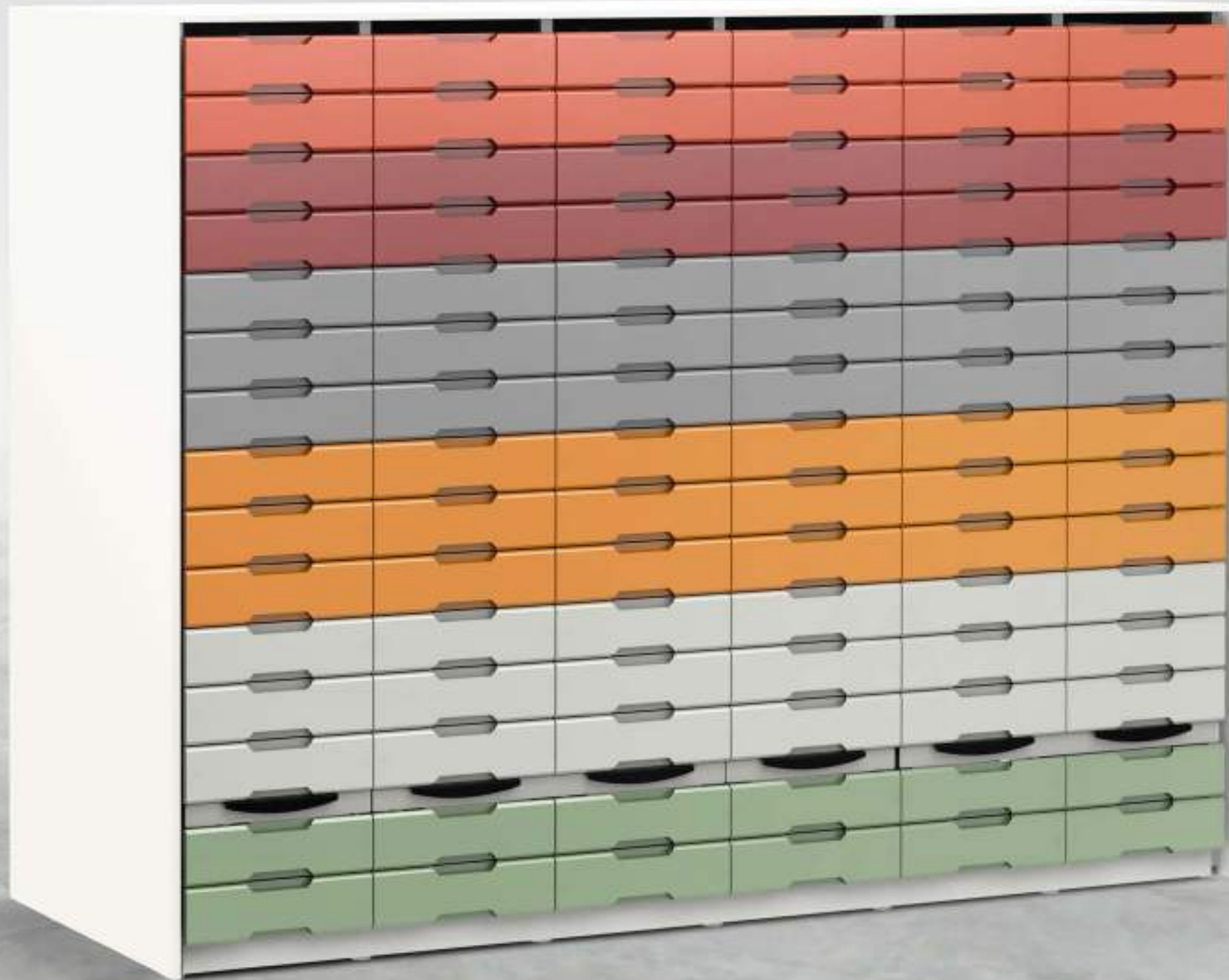
FARMARACK

DRUGSTORE CABINET



FARMARACK

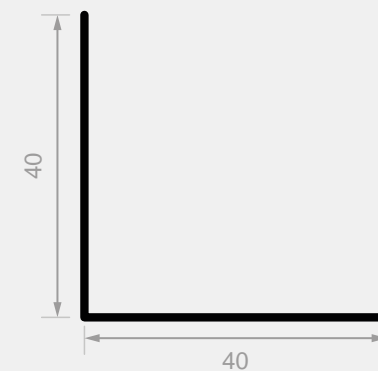
DRUGSTORE CABINET





PHARMACY

STORAGE SYSTEM



Bolted Leg Edge

It is a versatile rack system that is used for display, light storage and archiving purposes. It consists of only 2 parts: the profile (upright) and the metal shelf. It is shipped out disassembled and assembled with bolts and nuts. This rack system, which has an **average carrying capacity of 80 kg per shelf**, is used frequently for archiving and filing purposes. Alternative placements can be achieved in project layouts using different sizes.



F60 STEEL PEG

POWDER COATING FEATURES

Electrostatic Epoxy Polyester Powder Paint

- RAL 7016
- RAL 7046

Alternative color work can be done in line with the customer's request.



Bolted L Upright

(h x d x l)

1000 x 40 x 40 mm
1500 x 40 x 40 mm
2000 x 40 x 40 mm
2500 x 40 x 40 mm

Bolt

Nut

Profile Edge
1,5 mm x 2 mm



Bolted Shelf

Thickness
0,6 mm / 0,7 mm / 1 mm

(h x d x l)

20 x 310 x 600 mm
20 x 310 x 750 mm
20 x 310 x 930 mm

20 x 430 x 600 mm
20 x 430 x 750 mm
20 x 430 x 930 mm

20 x 590 x 600 mm
20 x 590 x 750 mm
20 x 590 x 930 mm

PHARMACY

STORAGE SYSTEM



